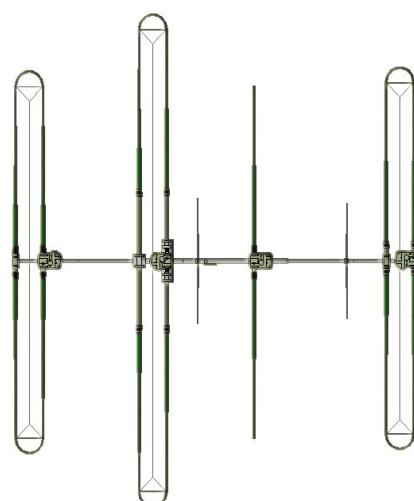


DB36 is part of a series of Yagi antennas that use loop elements for 30 and 40M performance. The DB36 performance is as good as the Monstir but the turning radius and weight are half of the Monstir. The DB36 has a optional 80M dipole that works with the SDA100 controller (standard on DB36) for effortless tuning 6M through 80M.

DB36 with 6m passive option



SPECS	DB36	80M Dipole option
Boom length	36 feet	same
Boom	2.5 inch with single truss	same
Longest element	48 feet	same
Turning Radius	26 feet	same
Weight	160 Lb	164 Lb
Mast clamps (included)	4 x 2 inch	same
Wind load	17.5 Sq/ft (cylindrical)	same
Wind rating	EIA 222-C	same
Adjustable elements	4	same
Power Rating	3 KW continuous	80M=1.6KW, rest 3KW
Feed points	1	2, Switch is provided
Frequency coverage	6.8 – 54 Mhz	3.4 – 54 Mhz
Tunning rate	1.3 ft/sec	same
Control cable	16 conductor 22 Ga	20 conductor 22 Ga

Performance for Ham Bands	DB36 Gain, Dbi	DB36 Front to rear, Db
80M	1.35	N/A, pattern at right angle to elements. (90 degrees)
40M	7.2	21
30M	8.2	18
20M	9.3	22
17M	9.9	27
15M	810.2	27
12M	10.4	21
10M	10.7	11
6M- 4 elements	4	2
6M- with optional passive element (6 elements total) 50.0- 5.3 Mhz	12.8	27

Order information	Part number	USA price	Description	Option
DB36	00436	\$4295	3 x 30-40M loop elements, 2 x 49' 1 x 48', Driven (48') element come standard with truss.	
DB36 Element Truss Kit	01603	\$178	Element trusses for the 2 end 39 foot loop elements, does not improve wind or ice load limits. For appearance only.	Yes
80M Dipole Kit	01811	\$536	Adds Dipole, Balun and switch for 80M operation	Yes
6M passive kit	06007	\$164	Adds 2 fixed passive element for 50.0- 5.3 Mhz for 6 elements total.	Yes
SDA Transceiver interface	01321	\$85	See SDA100 controller for details on additional cable options. Radio cable required.	Yes
Tunning Relay	01322	\$79	Used to prevent the linear from keying while the antenna is adjusting.	Yes
ALP Driver	01323	\$200	Driver chips are protected with relays when not in use	Yes
Remote Driver	01324	\$238	Uses Cat5 cable to mount ALP board at base of tower	Yes
16 conductor Control cable	03301-03322	See cable	22 Gage Shielded control cable for element motors. Will control 4 elements only. see control cable for length information	
20 conductor Control cable	03601-3622	See Cable	22 Gage Shielded control cable for 4 element motors and switching the 80M dipole.	
Connector junction box	01502	\$174	A pluggable junction of the control cable to antenna elements for 4 elements, replaces terminal blocks.	Yes
Connector junction box, 80M	01503	\$199	Same as 01502 but adds one more connector set for 80M Dipole and 20 conductor control cable.	Yes
33 volt supply	01101	\$44	Used for control cable lengths over 200 feet	Yes
N connector	01102	\$16	Adds a N connector to the ether the Driven element or 80M dipole switch.	Yes